

DEDICATION

Know all men by these present that Grace A. Bardin, a widow, owner, has caused the lands embraced on this plat to be surveyed, laid out and platted to be known as BARDIN TERRACE and the streets shown on this plat are hereby dedicated to the public.

Witnesses:

Grace A. Bardin, Owner  
Seal

ACKNOWLEDGMENT

State of Florida,  
County of Columbia

I hereby certify that on this 11th day of A.D. 1939, before me, Notary Public, personally appeared Grace A. Bardin, a widow, to me well known and known to me to be the individual described in and who executed the foregoing dedication and acknowledged the execution thereof to be her free act and deed for the use and purposes therein mentioned.

Witness my signature and official seal of Lake City, Columbia County, Florida, on this 11th day of January, A.D. 1939

My Commission expires the 11th day of January, 1939

SURVEYORS CERTIFICATE

I hereby certify that I am a registered Land Surveyor and that the plat herein delineated was made under my direction and that the plat is a true and correct representation of the lands platted and that permanent reference monuments have been placed as indicated on the plat and in accordance with the laws of Florida

Notary Public State of Florida  
Lake Surveyor State of Florida,  
Certificate No. 184

APPROVE BY CITY COMMISSION  
COLUMBIA COUNTY, FLORIDA

DATE 12-2-1937

SIGNED: R. L. ... Chairman

ATTEST: H. J. ... Clerk

APPROVED BY CITY COMMISSION  
LAKE CITY, FLORIDA

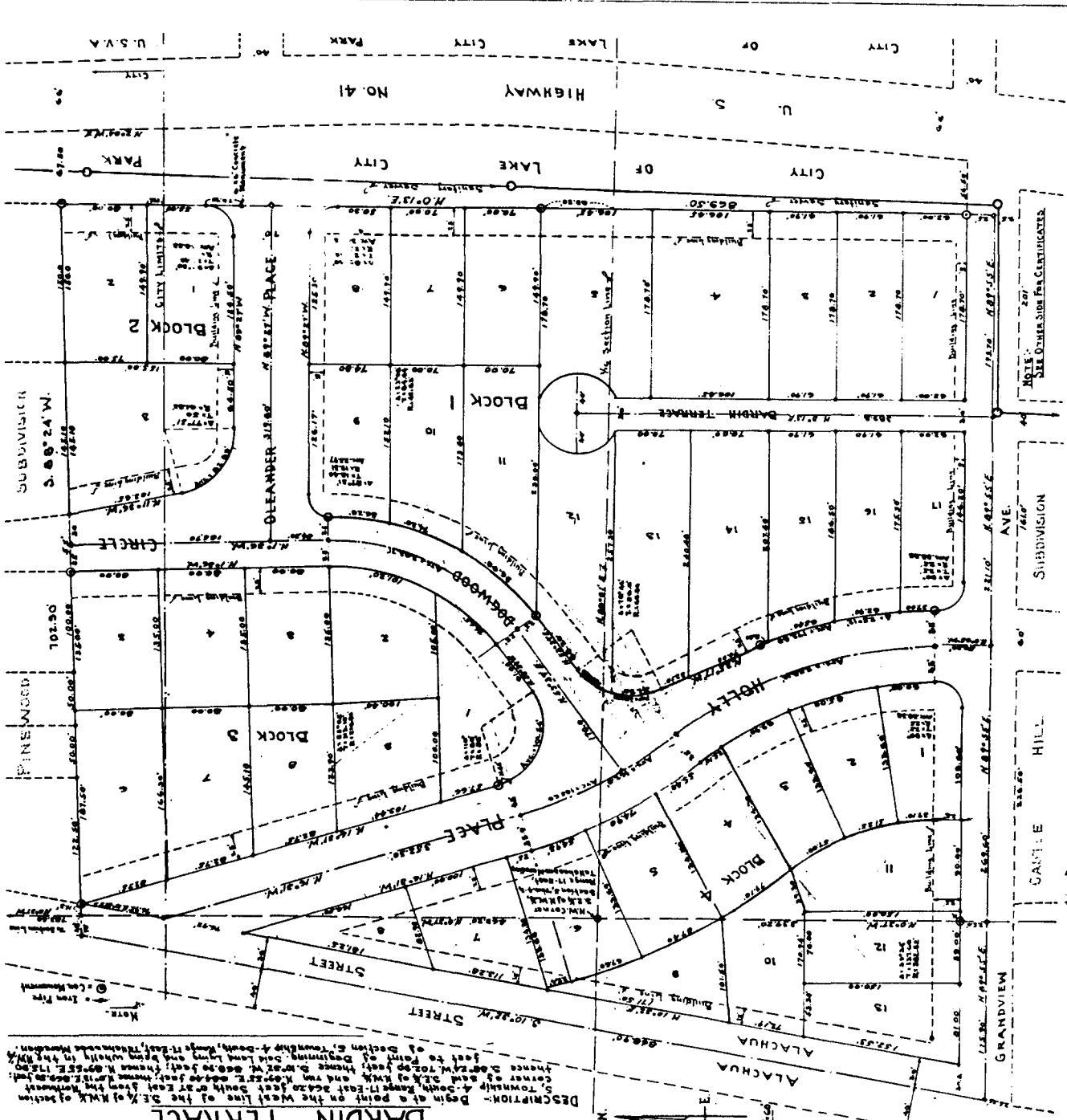
DATE 12-2-1937

SIGNED: ...

ATTEST: ... Clerk

BARDIN TERRACE

DESCRIPTION: Begin at a point on the West Line of the S.E. 1/4 of the NW 1/4 of Section 5, Township 4-South, Range 11-East, Tallehasssee Meridian, 264.20 feet South of 51 feet East from the Northwest Corner of said S.E. 1/4 NW 1/4 and run N. 89° 55' E. 446.40 feet; thence N. 0° 15' E. 66.50 feet; thence S. 88° 24' W. 702.90 feet; thence S. 10° 52' W. 66.90 feet; thence N. 89° 55' E. 115.90 feet to POINT OF BEGINNING. Said Lands lying and being wholly in the NW 1/4 of Section 5, Township 4-South, Range 11-East, Tallehasssee Meridian.



NOTE: SEE OTHER SIDE FOR CLARIFICATION

CANTILE HILL

GRANDVIEW

BARDIN TERRACE  
DESCRIPTION: Begin at a point on the West Line of the S.E. 1/4 of section 5, Township 4-South, Range 11-East, Tallehasssee Meridian 264.20 feet South of 51 feet East from the Northwest Corner of said S.E. 1/4 NW 1/4 and run N. 89° 55' E. 446.40 feet; thence N. 0° 15' E. 66.50 feet; thence S. 88° 24' W. 702.90 feet; thence S. 10° 52' W. 66.90 feet; thence N. 89° 55' E. 115.90 feet to POINT OF BEGINNING. Said Lands lying and being wholly in the NW 1/4 of Section 5, Township 4-South, Range 11-East, Tallehasssee Meridian.